

Paola Plus

By: BurdaStyle

<http://www.burdastyle.com/projects/paola-plus>



The Paola wrap dress is fit for many occasions: the office, Holiday parties or Sunday brunch- and looks stunning in this gorgeous feather print gabardine.

Materials

Feather print gabardine, self-made piping, fabric-covered buttons, snaps

Step 1 — PATTERN



Pattern

- 1 Front 2x
- 2 Back 1x
- 3 Front inset 2x
- 4 Back inset 2x
- 5 Sleeve 2x
- 6 Cuff 8x (4 interfaced on wrong side)
- 7 Collar 4x (2 interfaced on wrong side)
- 8 Belt 2x
- 9 Front facing 2x

- 10 Back facing 1x
- 11 Sleeve hem facing 2x

Materials: 2 1/2 yards material, 10 buttons, Interfacing, 5 sets of snaps.
Follow cutting layout on pattern PDF printout.

Step 2 — ADJUST PATTERN SIZES



Select your size according to the Burda-dimension table: dresses, blouses, jackets and coats according to the bust size, trousers and skirts according to the hip width. Change the pattern to fit your measurements if they deviate from the Burda-size chart. Cut out the pattern pieces according to your size.

Refer to our [“Adjust patterns for mixed sizes”](#) technique.

LENGTHENING OR SHORTENING THE PATTERN PIECES

Our pattern is calculated for a height of 5â— 6â— (168 cm). If you are taller or shorter, you can adjust the pattern pieces along the lines marked [“lengthen or shorten here”](#). This way the proper fit is maintained. Always adjust all pattern pieces along the same line to the same degree.

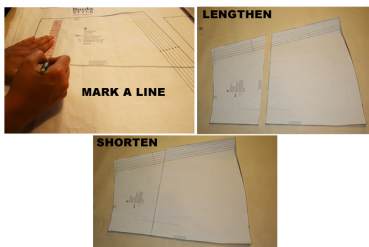
How to lengthen and shorten pattern pieces:

Cut the pattern pieces along the marked lines

To lengthen, slide the two halves of the pattern piece as far apart as necessary.

To shorten, overlap the two halves of the pattern piece as far as necessary. Blend the side edges.

Step 3 — LENGTHENING / SHORTENING PATTERN SIZES



ADJUST PATTERN SIZES

Select your size according to the Burda-dimension table: dresses, blouses, jackets and coats according to the bust size, trousers and skirts according to the hip width. Change the pattern to fit your measurements if they deviate from the Burda-size chart. Cut out the pattern according to your size.

Refer to our [Adjust patterns for mixed sizes](#) technique.

LENGTHENING OR SHORTENING THE PATTERN PIECES

Our pattern is calculated for a height of 5'6" (168 cm). If you are taller or shorter, you can adjust the pattern pieces along the lines marked [lengthen or shorten here](#). This way the proper fit is maintained. Always adjust all pattern pieces along the same line to the same degree.

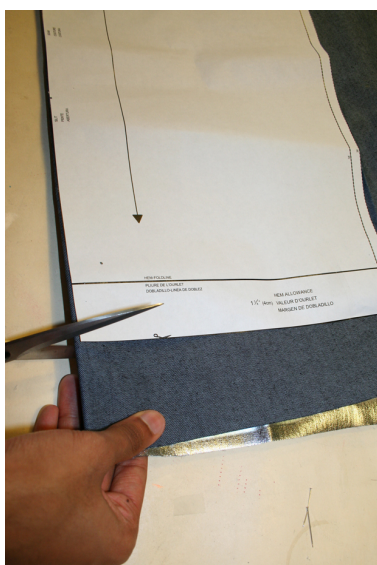
HOW TO LENGTHEN AND SHORTEN PATTERN PIECES:

Cut the pattern pieces along the marked lines

To lengthen, slide the two halves of the pattern piece as far apart as necessary.

To shorten, overlap the two halves of the pattern piece as far as necessary. Blend the side edges.

Step 4 — CUTTING OUT



CUTTING OUT

FOLD (↔ ↔ ↔ ↔) means: Cut on the fold, the fold being the center of the pattern piece, but never a cut edge or seam. The piece should be cut double, with the fold line forming the center line. Pattern pieces that are outlined with a broken line in the cutting diagrams are to be placed face down on the fabric. The cutting diagrams on the pattern sheet show how the pattern pieces should be placed on the fabric.

The cutting diagrams show the placement of the pattern on the fabric.

For a single layer of fabric, the pattern pieces are pinned to the right side. For double layers of fabric, the right sides are facing and the pattern pieces are pinned to the wrong side. The pattern pieces that are shown extending over the fold of the fabric in the cutting diagram should be cut last from a single layer of fabric.

SEAM AND HEMLINE ALLOWANCES are included on an average:

1" (3 cm) hemline, 5/8" (1.5 cm) for all edges and stitches. Using BURDA copying paper, transfer the lines and symbols of the pattern onto the wrong side of the fabric. Instructions can be found in the packaging.

INTERFACING

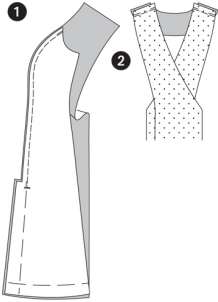
Press the interfacing pieces (indicated in the first step) onto the wrong side of the fabric.

SEWING

While sewing, the right sides of the fabric are facing.

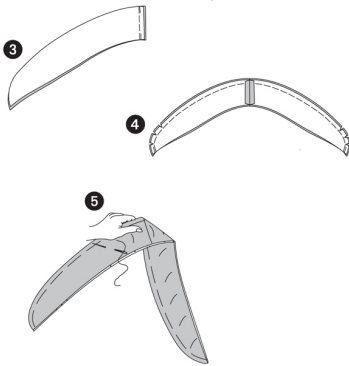
Transfer all lines of the pattern onto the right side of the fabric using basting stitches.

Step 5 — INTERFACING



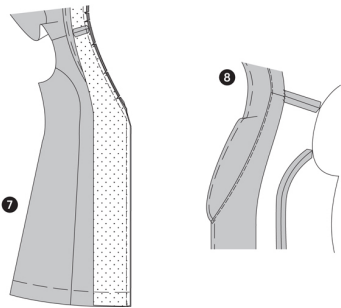
coming shortly

Step 6 — COLLAR



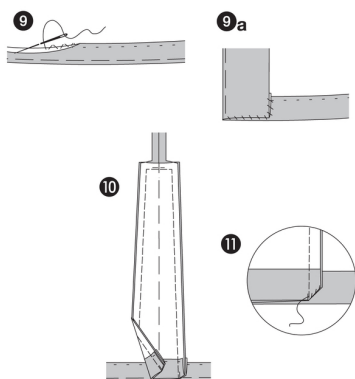
coming shortly

Step 7 — ATTACHING COLLAR



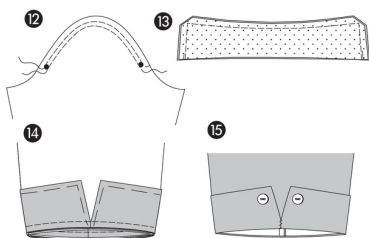
coming shortly

Step 8 — HEM & CUFFS



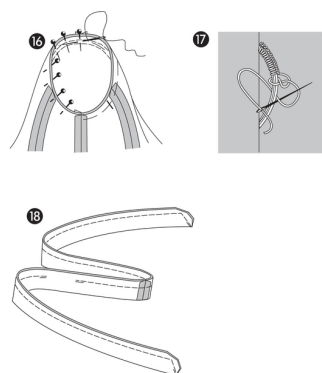
coming shortly

Step 9 — SLEEVE CUFFS



coming shortly

Step 10 — SLEEVE SETTING



coming shortly

BurdaStyle